

Ref: NewHT/SS



BloxwichAcademy
www.bloxwichacademy.co.uk

Date: 20th August 2020

Dear Parents/Carers

I am delighted to be able to write my first letter as the new Headteacher of Bloxwich Primary Academy. I feel extremely honoured and privileged to have been chosen to continue to build upon the successes that the school has already achieved. I am also looking forward to getting to know the children, parents/carers and staff.

Firstly, I wanted to take this opportunity to briefly introduce myself to you and to express my enthusiasm for the exciting times ahead. My name is Ms. Shepherd and my experience in education stems over twenty-five years, both within the primary and secondary sector in many local authorities. My most recent post was as the Deputy Headteacher at Albrighton Primary School and Nursery in Shropshire. I had four happy and successful years in this role, although I was sad to leave, I am ready and excited for the challenge ahead working in Bloxwich. This is a region that I am looking forward to returning to, as it is the place I was born and educated, and where I have experienced some of my most memorable and happiest years. I now live in Wolverhampton with my two daughters, who are aged 18 and 21. I enjoy being an active person and have many links with the local community through my hobbies: playing music and sport (and watching sports at every opportunity!)

My philosophy for education is based around the belief that we do the 'best by every child'. I hold a very strong, child-centered approach to teaching where consistency, praise, encouragement and challenge are key. I believe that every child has a unique potential waiting to be unlocked. As a teacher and a leader, it is a privilege to be able to inspire, enthuse, motivate and nurture children to fully achieve this. I am very much aware of the responsibility that my staff at Bloxwich and I have in ensuring that the highest standard of teaching and learning is delivered, but as well as this, I believe passionately that all pupils have the opportunity to learn core values of honesty and mutual respect in preparation for their life long journey ahead.

I believe the key to success in this next chapter for Bloxwich Primary School is to build and establish a whole school community, which values positive and respectful relationships. I believe that your voice as parents and carers is vital and that we as a school need to be approachable and give time to listen to your concerns, worries or thoughts.

Obviously, at this time you will all be anxious about COVID-19 situation which has had a major impact on all schools. We have given careful thought to the way that we will be managing the school with safety at the heart of all decisions. Attached to this letter is important information that you must read carefully in preparation for our return in September and includes details of the staggered return and changes to the PE uniform. For more detailed information about the changes we have had to put in place, please look on the school website.



Bloxwich Academy
www.bloxwichacademy.co.uk

Even during these unprecedented and difficult times, I would like to take this opportunity to thank the staff and Governors, who have impressed me so much during my recent visits. I already know that we have a hugely committed team at Bloxwich and I am sure that when I finally get to meet the children, they too will be wonderful. What a great place for any new Headteacher to start!

Finally, you can be assured that as Headteacher at Bloxwich Academy, I will strive to make sure that your child/children will get the best education whilst they are members of our school family.

When we return to school, I will be outside school regularly so please feel free to come up and introduce yourselves to me.

I look forward to meeting you all in the coming weeks.

Yours sincerely,

Ms S. Shepherd

Appendix 1: September 2020 staggered start times and arrangements



Bloxwich Academy
www.bloxwichacademy.co.uk

Please read the following information regarding how we are meeting Government guidance on a safe re-opening of the school and for the arrangements for individual classes and year groups. Please be assured that the safety of your children is of the utmost importance, as well as ensuring that the children return to a familiar and purposeful school setting. Please also note that these arrangements will be under regular review and may be subject to change in line with Government advice.

Start of term arrangements

Thursday 3rd September: Academy will open for children in Years 3, 4 and 5.

Friday 4th September: Academy will open for all year groups.

Bubbles

The classes have been organised into bubbles. These bubbles will have separate entrances, toilets, and break/lunch time during the school day.

	Class	Start time	End time
Early Years Bubble	Nursery AM	<i>Please See Early Years booklet for details</i>	
	RHT		
	RFH		
KS1 Bubble	1CS	8:45 am	3:05 pm
	1NC	8:30 – 8:45* am	3:15 pm
	2LW		
	2RW		
KS2 B	3AC	8:55 am	3:15 pm
	3DB		
	4JF		
KS2 A	4SB	8:45 am	3:05 pm
	5MH		
	5LJ		
Y6 Bubble	6EB	8:30 – 8:45* am	3:15 pm
	6JM		





Bloxwich Academy
www.bloxwichacademy.co.uk

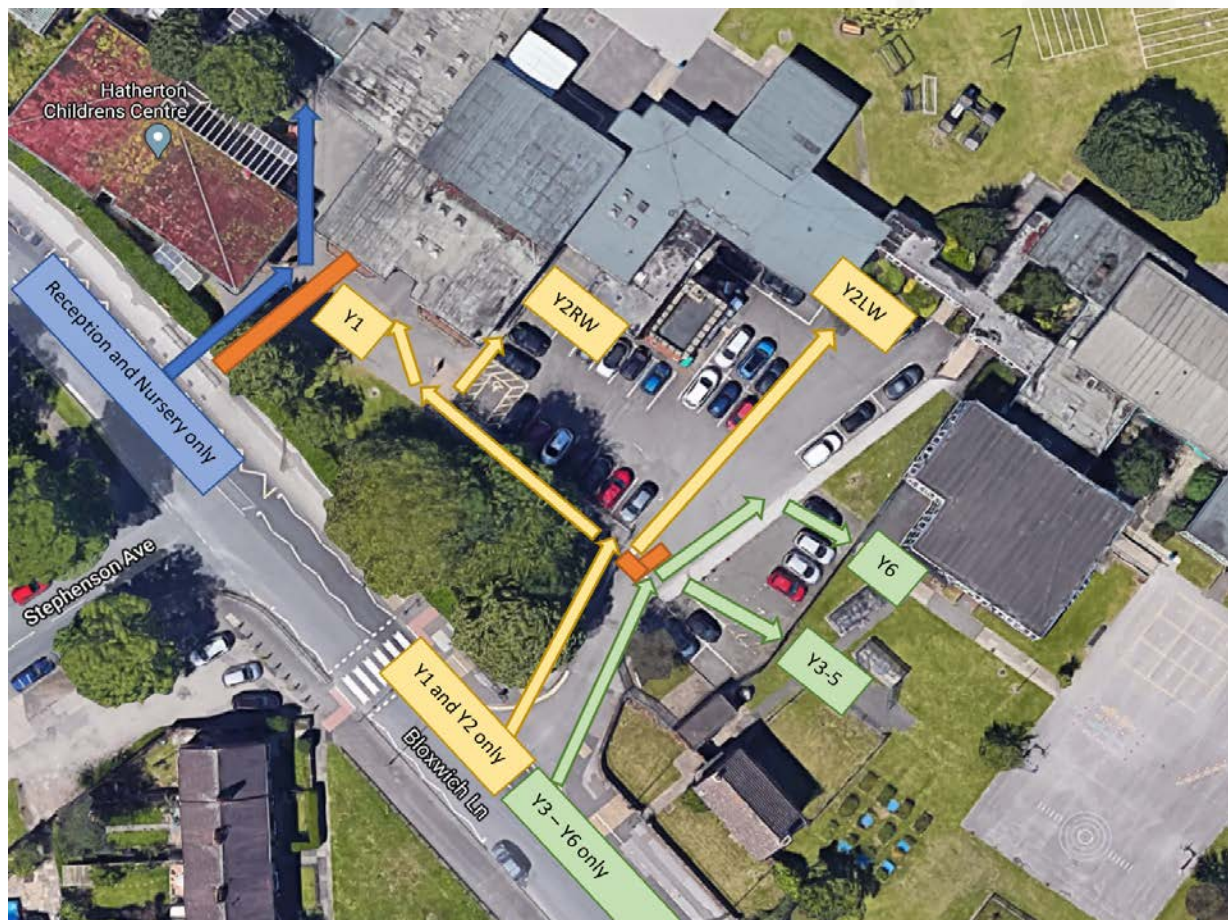
Entering the school grounds

To ensure a smooth start to the day, we will be using each entrance into the school grounds for different bubbles.

Reception and Nursery pupils will enter via the single gate entrance on Bloxwich Lane by Hatherton Children's Centre. Please then follow the path through the wooden gate to the Nursery entrance. If you have a child in Early Years and a child in a different year group, please return to Bloxwich Lane and use the designated entrance for those year groups.

Year 1 and Year 2 pupils will enter via the single gate next to the car park entrance. Year 1 and Year 2RW pupils will then follow the path around to the Year 1 entrances and the library door entrance for Year 2RW. Year 2LW pupils will need to cross through the designated gap in the fence, past the barriers to enter the Year 2LW entrance from the car park.

Years 3, 4, 5 and 6 pupils will enter via the double car park gates. Year 6 pupils will enter through the single gate nearest to the school building and follow the path to enter directly into the Year 6 classrooms. Year 3-5 pupils (following their designated arrival times for KS2 Group A and Group B) will enter through the double gates near the bike shed and enter the school through the KS2 playground entrance.





Bloxwich Academy
www.bloxwichacademy.co.uk

Leaving the school grounds

Adults collecting the children should enter the school grounds at their designated collection time using the same morning location.

Please note that entering the school playground area to collect a child in KS2 is a one-way system. When collecting a child, please wait in the designated waiting zone and the class teacher will send your child to you. If you would like to speak to the class teacher, please call to make an appointment. **Reception, Nursery, Year 1 and Year 2** pupils will be dismissed from the same classroom door as the morning.

KS2 Bubble A (5MH, 5LJ, 4SB) pupils will be dismissed on the right-hand side of the playground.

KS2 Bubble B (3AC, 3DB and 4JF) and **Y6** pupils will be dismissed from the designated areas of the playground on the map below.





Bloxwich Academy
www.bloxwichacademy.co.uk

Break Times

Each bubble will be given a break time of 15 minutes between 10:15 and 10:45. A separate playground with separate play equipment has been designated to each bubble, along with designated toilets. Additional cleaning staff have been employed during the school day to ensure the toilets are cleaned before and after each break in the school day.

During wet break times, children will have free time in their classrooms and will not mix between bubbles.

Lunch Times

Both school halls will be used for lunch times. Designated zones and spaces have been organised for your child to eat within their bubble only. School dinners will be ordered in the morning during registration as normal. Lunch times will be staggered as normal, so the children have chance to play within their bubbles on designated playgrounds before entering their dinner hall.

During wet lunch times, the children will be given free time in their classrooms and will go to their designated hall for lunch as normal. They will not mix between bubbles.



Bloxwich Academy
www.bloxwichacademy.co.uk

Appendix 2: Change in PE uniform from September 2020

PE Uniform from September 2020

Dear Parents/Carers,

In light of the restrictions placed upon us due to Covid-19, we have had to rethink the way that PE will be delivered during Autumn Term. We will continue to offer 2 hours of curricular PE but these will take place during one whole afternoon. The PE sessions will be outside (weather permitting) and pupils must wear their outdoor PE kit (see below), which must be worn to school all day on the timetabled PE day (see below). This arrangement will avoid unnecessary close contact between staff and children if assistance is needed with changing.

Reception children follow the Early Years curriculum where the focus is on lots of opportunities to develop gross-motor skills throughout the week. As a result, there is no formal one hour PE slot but a requirement to have trainers in school every day so that lots of activities can be accessed. Therefore, Reception children will not require a PE kit initially apart from trainers or pumps.

PE Timetable

Every Key Stage 1 and Key Stage 2 class will have a 2 x one-hour PE lesson. The children are to come to school in their PE kits on that day. The lessons will be outside and commence on Monday 8th September.

Autumn 1 (until October half term)	Year Groups		
	Monday	Year 5LJ Swimming kits	Year 5MH Outdoor PE kit
Tuesday	Year 3 Outdoor PE kit		
Wednesday	Year 1 Outdoor PE kit		
Thursday	Year 4 Outdoor PE kit		
Friday	Year 6 Outdoor PE kit		



Bloxwich Academy
www.bloxwichacademy.co.uk

PE Kit

All clothing must be plain black and white.

- Black shorts
- Plain black jogging bottoms
- White t-shirt or polo shirt
- Black sweatshirt (for outdoor use)
- Black/ White socks
- Trainers (for outside PE)
- Plimsolls (for indoor PE- left in school)
- Earrings removed (and left at home if possible)
- Long hair tied up

You may have noticed that there is a new addition to the PE kit and now includes plain, black joggers (no labelled brands). Pupils are to wear these black joggers with the rest of the PE kit on the day your child has PE. If your child wants to put their shorts on underneath their joggers they are able to do so.

Thank you for your support and co-operation.

Yours sincerely,

Ms S Shepherd
Headteacher