

# Welcome

## Bloxwich Academy Secondary School Public Consultation

We are pleased to present proposals for the redevelopment of Bloxwich Academy Secondary School. This project is being delivered by Kier on behalf of the Department for Education (DfE) and aims to provide a modern, high-quality and sustainable learning environment for students and the wider community.

This consultation is your opportunity to:

- Learn more about the proposals
- Understand the benefits for the students and community
- Ask questions
- Share your views on the proposals before a planning application is submitted

Key dates:

- **August 2026**  
Planning application submitted
- **Spring 2027**  
Construction commences
- **Summer 2029**  
Construction complete

Your feedback is important and will help shape the final proposals submitted.



Indicative image of Bloxwich Academy Secondary School

# Transforming Education in Bloxwich

The existing secondary school buildings are no longer fit for modern education. They require significant maintenance and include materials that make refurbishment difficult. The proposals provide an opportunity to replace these buildings with a modern, purpose-built school designed to meet the needs of current and future students.

The vision is to create a school that supports students to thrive academically, socially and emotionally, while also contributing positively to the local community.

The proposed redevelopment involves relocating the secondary school building to the western corner of the current site. This location has been carefully chosen to:

- Ensure the school is built within the area at the lowest risk of flooding
- Create greater separation from public areas, improving safeguarding and privacy of the pupils, protecting the learning environment
- Align the building in a way that compliments the sites constraints

The proposals aim to:

- Provide modern, high-quality learning environments
- Improve safety, safeguarding and accessibility
- Support a broad and inclusive curriculum
- Create facilities that benefit the wider community



Indicative image of Bloxwich Academy Secondary School

# A Thoughtfully Designed School

The proposals involve the redevelopment of the existing secondary school site, replacing current buildings with a new, modern school designed for around 900 students aged 11–16.

The design has been developed to provide high-quality teaching spaces, improve the overall layout of the site, and create a more efficient and accessible learning environment.

Key features of the proposals include:

- A three-storey main school building
- Modern classrooms and specialist teaching spaces with the latest technology
- Dining, assembly and social spaces

## Sports and community facilities

The new school will include a range of indoor and outdoor sports facilities, designed for both school and community use, supporting health, wellbeing and local access.

- Sports hall and activity spaces
- Swimming pool
- Outdoor pitches and courts



Indicative image of Bloxwich Academy Sports Centre

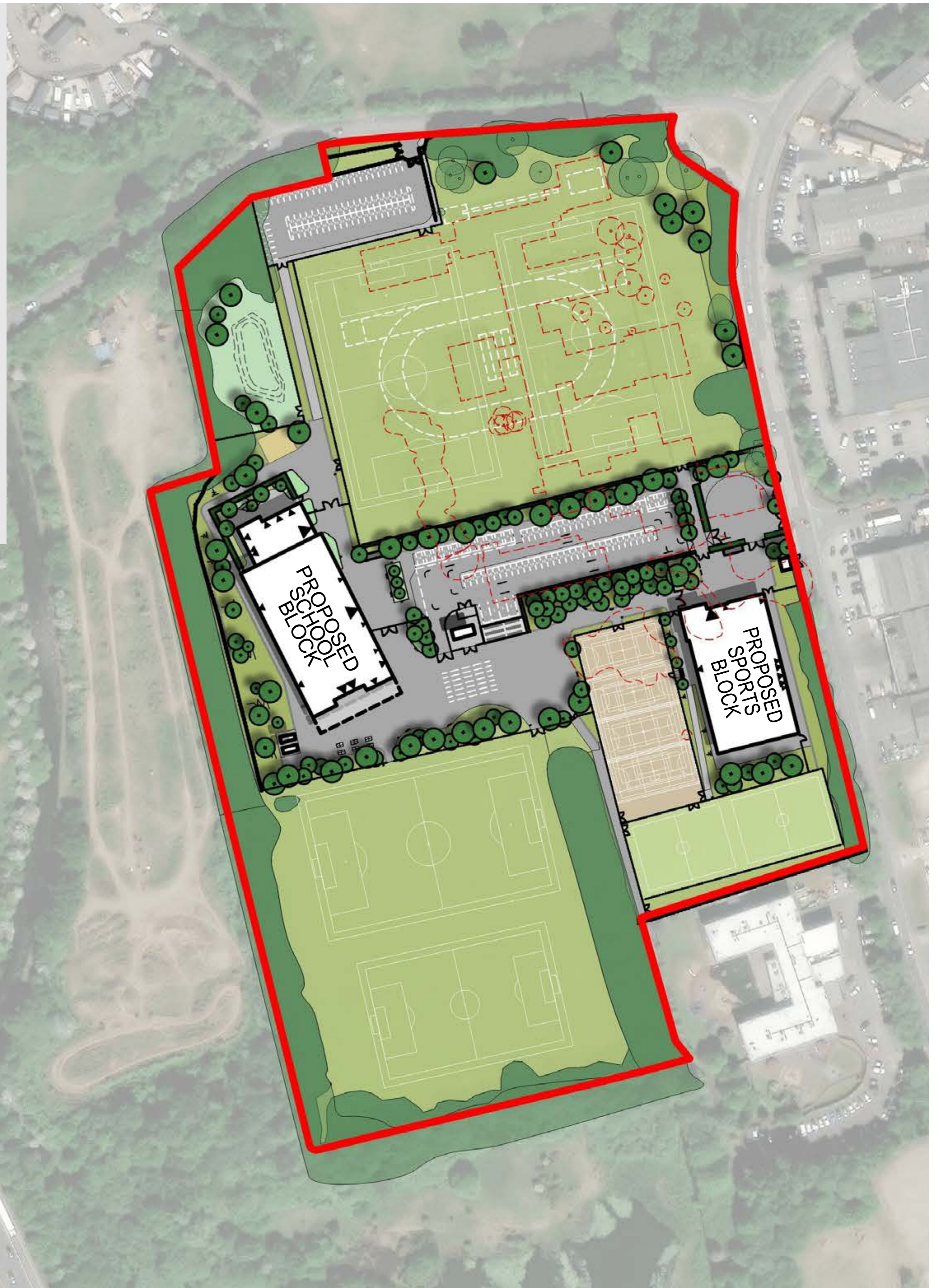
# A Carefully Designed Site

The layout of the new school has been developed to make the best use of the existing site while improving safety, movement and the overall experience for students, staff and visitors.

The design takes into account site constraints, including flood risk, access routes and the need to maintain school operations during construction.

Key design principles include:

- Locating buildings in the most appropriate areas of the site
- Improving access and circulation
- Providing high-quality outdoor spaces
- Ensuring safe and efficient movement



Indicative site layout

# Safe, Accessible and Community Focussed Design

The proposed design prioritises safety, accessibility and minimal disruption:

- Access from Bloxwich Lane will be retained, with parking aligned to existing Traffic Regulation Orders
- Cycle and pedestrian routes are supported by nearby supporting infrastructure already in place
- New secure fencing, CCTV and access-controlled gates to protect pupils and improve safeguarding
- Noise and traffic assessments confirm no significant disruption to teaching or the local area will be apparent due to the proposed redevelopment.

## Access:

As part of the proposals there will be:

- Improved drop-off and access arrangements with a turning circle to improve the flow of traffic
- Safer pedestrian routes
- New parking provision

## Sustainability:

- Designed to achieve Net Zero Carbon in operation
- Enhanced biodiversity and green spaces including allotments, rain gardens and attenuation pond



Indicative ariel view of Bloxwich Academy Secondary School

# How to Share Your Views

We are currently in the pre-application stage of the planning process. Your feedback will be used to help shape the final planning submission.



We want to hear from you. Please share your thoughts on:

- The location and layout of the new school
- The proposed benefits and key features
- Environmental and sustainability features
- Access and safeguarding improvements
- Any concerns or suggestions

Please submit your feedback via the form provided or online at <https://bloxwichacademy.co.uk/secondary/>

You can also access the feedback from by scanning the QR code or by contacting us directly via the dedicated project email address [postbox@matrixacademytrust.co.uk](mailto:postbox@matrixacademytrust.co.uk) or filling out the paper copy at this consultation event.

Scan me

