

Bloxwich Academy *Newsletter*

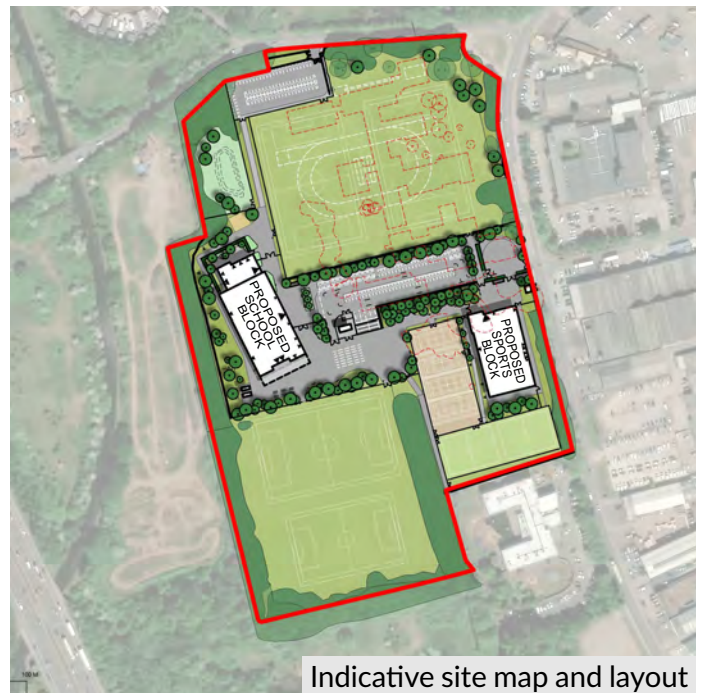
Bloxwich Academy Secondary School – Public Consultation



Indicative image of the proposed Bloxwich Academy Secondary School

Kier is bringing forward proposals on behalf of the Department for Education (DfE) for the redevelopment of Bloxwich Academy Secondary School. These proposals aim to deliver a modern, high-quality, secure and sustainable learning environment for pupils, staff and the wider community. The development of the school will involve relocating the building within the site, improving access and safeguarding, while enhancing outdoor learning and play spaces.

The existing buildings are in poor condition, require significant maintenance and include materials that make refurbishment challenging. Redevelopment provides a safe and future-ready learning environment. The vision is to create a school that reflects the ambition and potential of its pupils, where modern facilities, improved outdoor spaces and enhanced features support every child to thrive, academically, socially and emotionally.



Indicative site map and layout

What's Changing?

The existing school building will be replaced with a new three-storey building for around 900 students, including modern classrooms, science labs, latest technology, arts, dining and assembly spaces. The school will be located in the western corner of the site. This location has been chosen to:

- Avoid areas at risk of flooding
- Improve security and safeguarding by separating the school from public overlooking and access

What's New?

- Modern facilities and teaching spaces with the latest technology
- New sports and swimming pool facilities which will also be available for community use
- A new multi-use games area (MUGA) and courts
- Four new football pitches, cricket pitch, athletic spaces including running track, high jump and long jump pits
- Informal play areas and learning environments
- Rain water garden and allotment
- Sustainable drainage features such as an attenuation pond
- Net Zero Carbon design (EV charging, Ground Source Heat Pumps, Solar Panels etc.)

Access and Transport

The site will remain well connected by foot, cycle and bus, with stops on Leamore Lane, Stephenson Avenue and Bloxwich Lane. Access to the site will be improved through the existing access route and will not disrupt the regular flow of traffic in the area.

There will also be improved drop-off areas, including a turning circle and enhanced pedestrian routes and parking provision.

Supporting all Students

As part of the development, specific facilities such as breakout rooms and dedicated sensory spaces will be provided for students that require additional support.

Sustainability and Environment

The development will retain key habitat areas, introduce new planting and follow best practice to safeguard wildlife. As part of the wider project works, advice from Natural England and ecological experts is being sought to help ensure that biodiversity is not only protected but enhanced throughout the development of the new secondary school.



Indicative image of the proposals Sports Centre

**HAVE
YOUR
SAY**

We're holding a public consultation on our proposals, before finalising the design and submitting a planning application to Walsall Council.

The public consultation will run from **2nd June to 30th June 2026**. A drop-in event will be held on **10th June** at Bloxwich Academy Secondary School, Leamore Lane, Bloxwich, Walsall, WS2 7NR from **3:30pm to 7:00pm**, where you can view the proposals, speak to the project team, ask questions and share your views.

Key dates:



To view the proposals and have your say, please scan the QR code

Scan
me



Contact us

Should you require any further information, or need the consultation materials in a different format, please, contact us by emailing postbox@matrixacademytrust.co.uk